

EVENTS, STREAMING & MORE

IB — Live WEEKS

Welcome

29
April

B — Live WEEKS

FOCUS ON:

B_Materials

A journey through leathers, fabrics, stones and metals, to discover how to choose the perfect material starting from its application, from residential to contract.

Matteo Pieri (Project Development Director)

Elena Annibali (Marketing Analyst)

Questions & Suggestions

BORZALINO
ITALIAN LUXURY LIVING

Follow us



#BORZALINO_ITALY

A collection of various luxury materials arranged on a dark background. The materials include: a piece of light-colored, cracked leather on the left; a large, textured blue-green material in the upper left; a square piece of woven fabric in the upper center; a piece of light brown leather with a cracked texture on the right; a dark wood-grain panel in the lower left; a dark metal rod in the lower left; a dark wood-grain panel in the lower center; a roll of orange-brown leather in the lower right; and a dark wood-grain panel in the bottom left corner.

ITALIAN LUXURY MATERIALS

Enjoy

BOFFA
SILVER
SILVER

BORZALINO
ITALIAN LUXURY LIVING

BORZALINOMATERIALSCOLLECTION2020
WORKTOOLS

BORZALINOKITWORK2020



COLLECTION2020



TECHNICAL2020



PRICELIST2020

BORZALINO
ITALIAN LUXURY LIVING

BORZALINOKITWORK2020



WORK
kit

- Leather
- Fabric
- Gros-grain
- Trap
- Thread
- Embroideries

A practical bag that collects leather samples and other finishes to facilitate the choice of every detail of the product.

Finishing
MATERIALS
BOX

- Wood
- Marble
- Metal
- Glass



A useful container that collects marble, wood, metals and glass to facilitate the choice of every detail of the product.


BORZALINO
ITALIAN LUXURY LIVING

BORZALINOMATERIALSCOLLECTION2020

LEATHERSCOLLECTION

ANILINE, FULL-GRAIN, BUFFED AND EVEN VEGETABLE TANNED LEATHERS,
A PRECIOUS MATERIAL CAPABLE TO ADD VALUE AND GIVE
THE PRODUCTS DIFFERENT IDENTITIES.

N. 9

A close-up photograph of several fabric swatches, likely leather or a similar textured material, arranged in a fan-like pattern. The colors range from dark, rich browns to lighter, warm tan and beige tones. The texture is pebbled and consistent across all samples. The word "SEQUOIA" is printed in a clean, white, sans-serif font, centered horizontally across the middle of the image.

SEQUOIA

LEATHERCOLLECTION2020



SEQUOIA leather cat. F6

Leather of European origin, with a distressed vintage effect.

Thickness 0.9-1.1 mm

This high quality article is obtained starting with nubuck leather, which is slightly levelled with aniline and hand rubbed to give an aged effect. Very warm and silky feel.



ZALINO
... IN LUXURY LIVING



VEGETABLEtannedLEATHER

MADE IN ITALY



theTANNING

BORZALINO
ITALIAN LUXURY LIVING



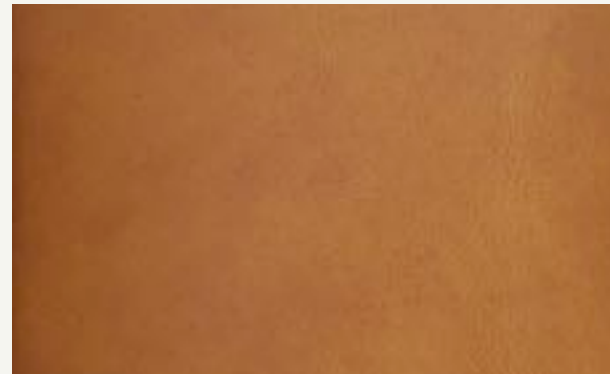
TUSCANIA

TUSCANIA
Scratches recovery



BORZALINO
ITALIAN LUXURY LIVING

LEATHERSCOLLECTION2020



22



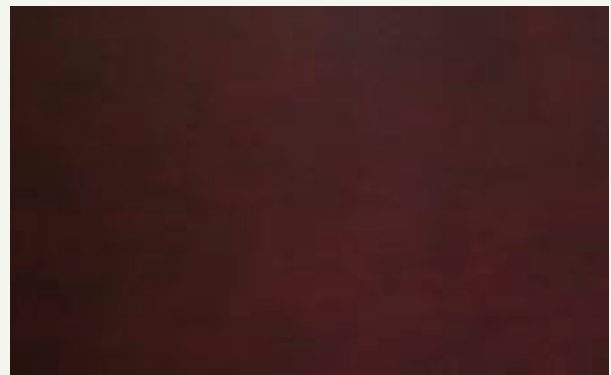
26



20



28



23



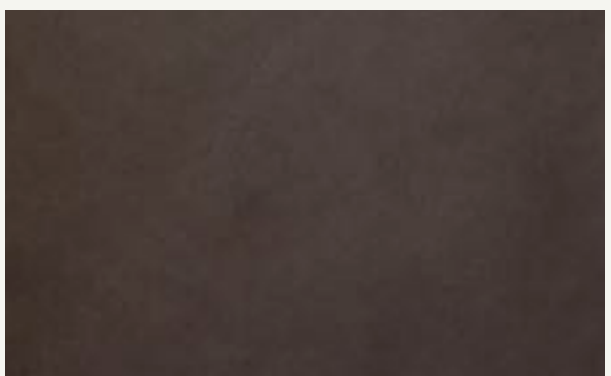
21



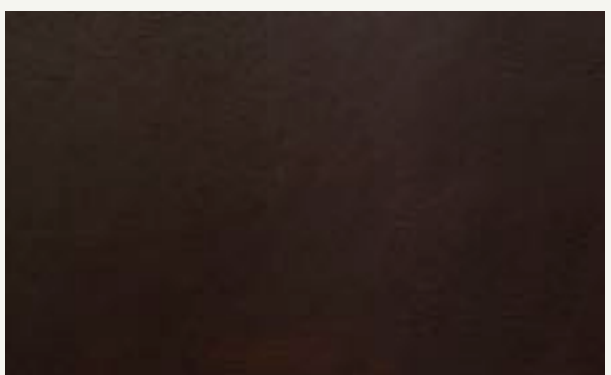
25



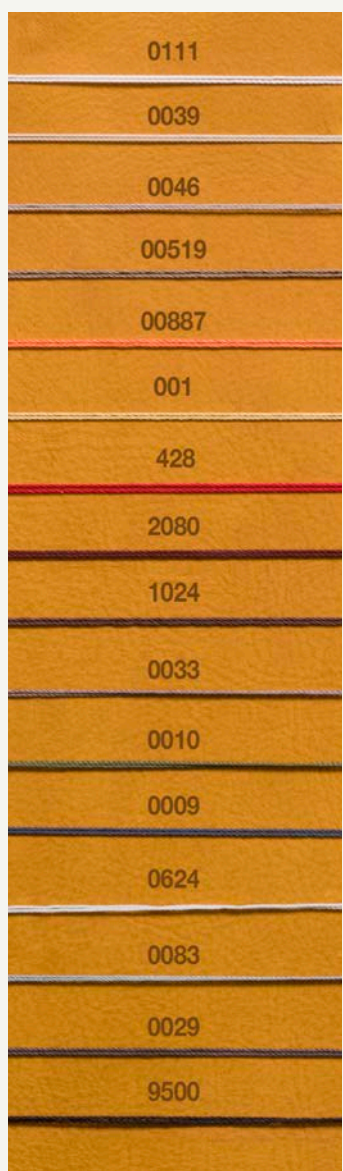
29



24



27



R2 R6 R5

THREAD
Collection

EMBROIDERY
Collection



TUSCANIA
Vegetable tanned leather

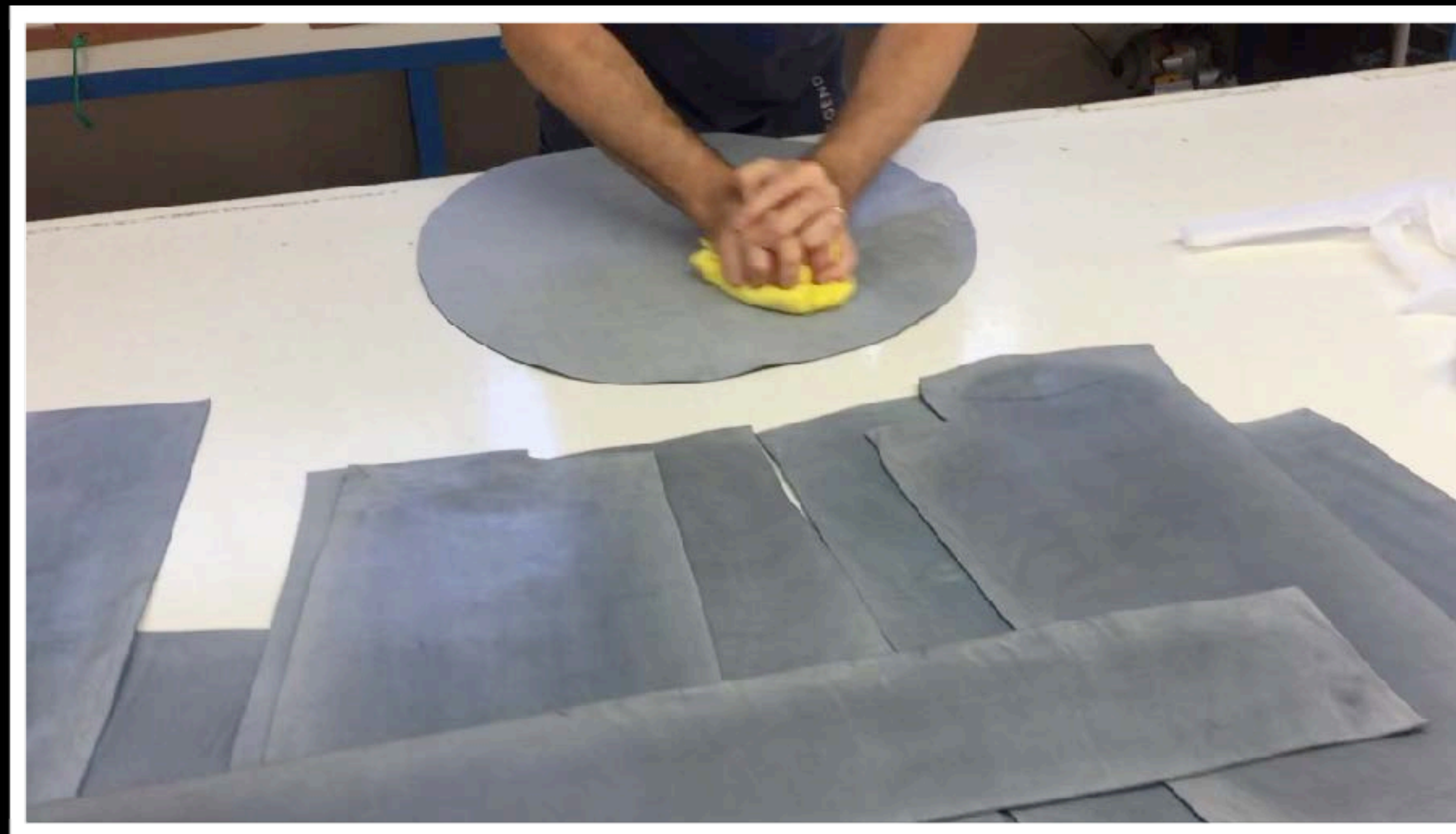


BORZALINO
ITALIAN LUXURY LIVING

GHOST



GHOST
Wax removing

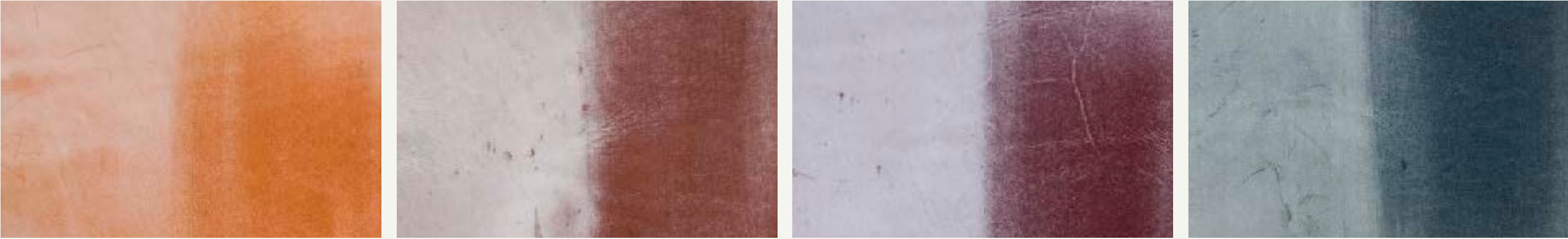


BORZALINO
ITALIAN LUXURY LIVING

LEATHERSCOLLECTION2020



GHOST
Vegetable tanned leather



31

32

34

36



EMBROIDERY
Collection

R4



THREAD
Collection

0111

0039

0046

00519

00887

001

428

2080

1024

0033

0010

0009

0624

0083

0029

9500



33



35



37



BORZALINO
ITALIAN LUXURY LIVING



BORZALINO
ITALIAN LUXURY LIVING

BORZALINOMATERIALSCOLLECTION2020

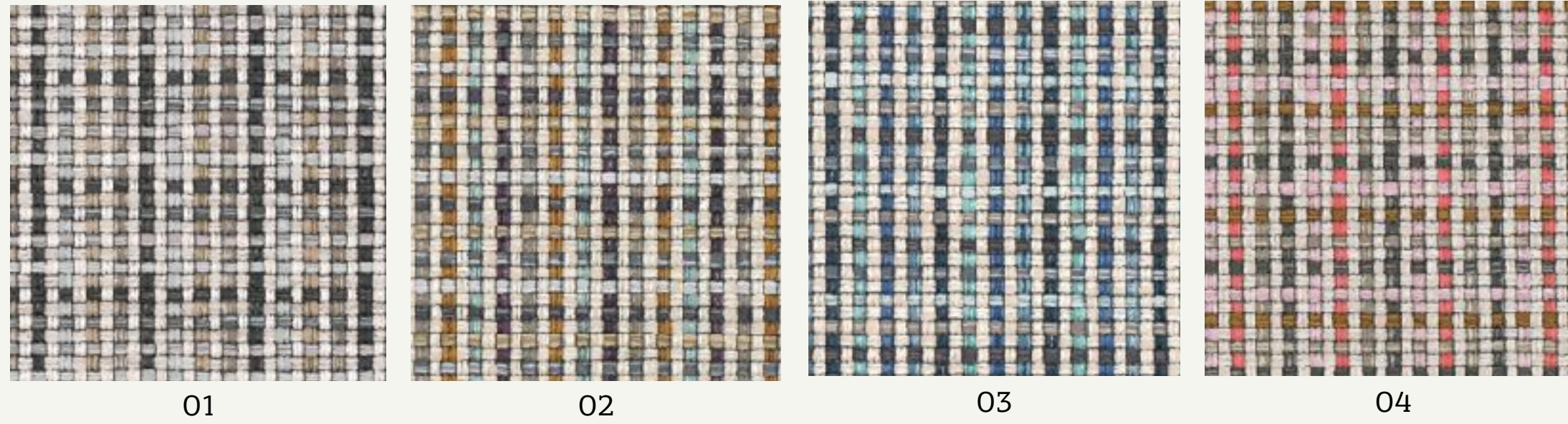
FABRICSCOLLECTION

EVERY YEAR, BORZALINO PUTS A GREAT DEAL OF EFFORT INTO SEEKING THE FABRICS TO INCORPORATE IN ITS COLLECTION SELECTING TEXTURES CREATED BY THE BIGGEST FABRIC BRANDS WORLDWIDE.



KUBOA9072

FABRICSCOLLECTION2020



KUBOA9072
fabric cat. LUX6

COMPOSITION
49% CO 27% VI 11% PA 9% LI 4% PC
Martindale 60,000
Design: a colourful and chunky basket weave

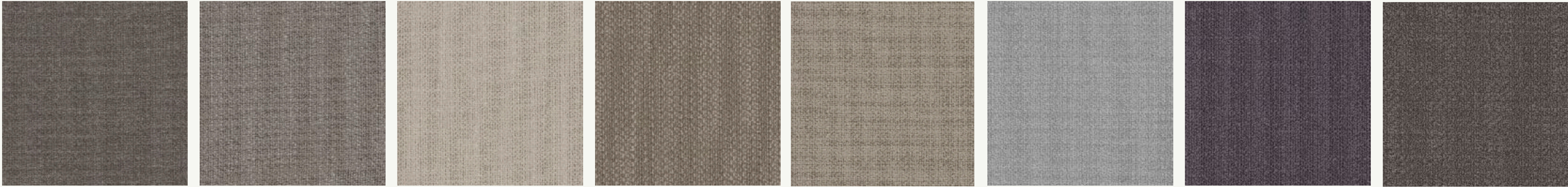


BORZALINO
ITALIAN LUXURY LIVING

Bench **MINERVA**
Seat fabric KUBOA 9072 col. 04
Arm leather SEQUOIA col. 4027
Base wood col. Light Brown Oak
Metal feet col. Beige YW276I

LOOP5042

FABRICSCOLLECTION2020



06

08

09

10

12

18

19

29

LOOP5042
fabric cat. L

COMPOSITION
46% PC 23% WO 15% CO
12% PA 4% PL
Martindale 60,000
Design: textured
Semi-Plain Weave



31

32

33

35

36

37

BORZALINO
ITALIAN LUXURY LIVING



38

39

42

45



Sofa **FRANKLIN** seat and back fabric LOOP K5042 col. 42
Wooden base Brown Oak

Cushions leather SEQUOIA col. 4027, fabric BONSULTON Z625 col. 07 and fabric KUBOA 9072 col. 04

BONSULTONZ625

FABRICSCOLLECTION2020

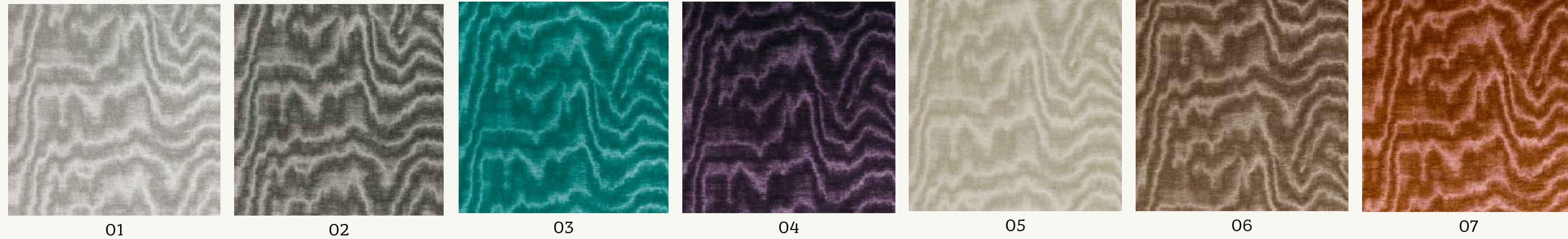


BONSULTONZ625

fabric cat. LUX4

COMPOSITION
42% CO 58% VI 15%
Pile: 100% Viscose
Martindale 40,000
Design: printed Velvet

BORZALINO
ITALIAN LUXURY LIVING





VALENZA Z598

FABRICSCOLLECTION2020



VALENZAZ598

fabric cat. L

COMPOSITION
100% CO
Martindale 60,000
Design: Jacquard Weave

BORZALINO
ITALIAN LUXURY LIVING



01



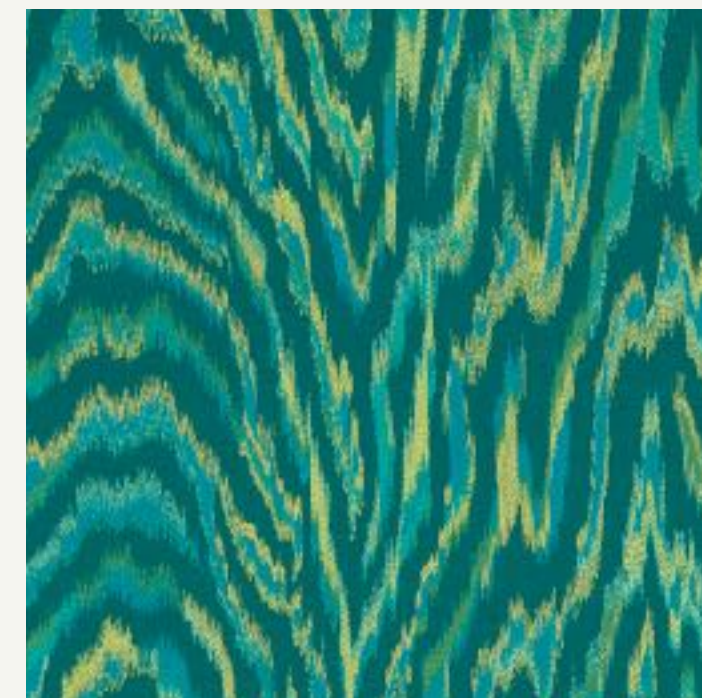
02



03



04



05



06

NISHI9079

FABRICSCOLLECTION2020

01



02



03



04



NISHI9069
fabric cat. N

COMPOSITION
69% VI 17% PL 14% CO
Pile: 100% Viscose
Martindale 60,000
Design: Jacquard Velvet

05



06



07



BORZALINO
ITALIAN LUXURY LIVING



Bench **AYTON** covering fabric NISHI 9079 col. 07
Frame leather SEQUOIA col. 4020
Metal feet mat finish Vulcan Grey



BORZALINO
ITALIAN LUXURY LIVING

BORZALINOMATERIALSCOLLECTION2020

WOODSCOLLECTION

THE COLLECTION IS ENRICHED WITH PRODUCTS MADE OF NATURAL MATERIALS
SUCH AS WOOD IN THE FINEST ESSENCES AND COLORS.

N. 9



WOODSCOLLECTION2020



NOCE CANALETTO
Wood

BORZALINO
ITALIAN LUXURY LIVING

DARKCASHMERE

WOODCOLLECTION2020

DARK CASHMERE
Lacquered mat wood



Lacquered mat wooden uprights
col. Dark Cashmere



Satin
Brass
details



Bronze glass
shelves



BORZALINO
ITALIAN LUXURY LIVING

BORZALINO
ITALIAN LUXURY LIVING

BORZALINOMATERIALSCOLLECTION2020

MARBLESCOLLECTION

LIKE A PAINTING, NATURAL STONES PRESERVE A TIMELESS BEAUTY
AND MAKE EXCLUSIVE ENVIRONMENTS CREATING MAGNIFICENT
AND REFINED ATMOSPHERES.

N. 20





SAHARANOIR

MARBLECOLLECTION2020

SAHARA NOIR
Marble cat. MA2



BORZALINO
ITALIAN LUXURY LIVING



AMAZONITE EXTRA

MARBLESCOLLECTION2020

**AMAZONITE
EXTRA**
Marble cat. MA5



BORZALINO
ITALIAN LUXURY LIVING

The image features a complex marbled paper pattern. The background is a mix of light blue and greyish-blue tones. Overlaid on this are numerous veins of brown and tan, some thick and some thin, creating a web-like structure. There are also some darker, almost black, spots and lines scattered throughout. The overall effect is a rich, textured, and somewhat abstract design.

BLUEISLAND

MARBLESCOLLECTION2020

BLUE ISLAND
Marble cat. MA4

BORZALINO
ITALIAN LUXURY LIVING



Tavolini ALEX

The image features a terrazzo-style background with a dense, irregular pattern of small, angular chips. The chips are primarily light beige or off-white, interspersed with smaller pieces of burnt orange and black. The overall effect is a textured, speckled surface. The word "BRAGHI" is centered horizontally and vertically in a white, bold, serif font with a slight drop shadow.

BRAGHI

MARBLESCOLLECTION2020

BRAGHI
Granite cat. MA1



BORZALINO
ITALIAN LUXURY LIVING

BORZALINO
ITALIAN LUXURY LIVING

BORZALINOMATERIALSCOLLECTION2020

METALSCOLLECTION

METAL IS A NATURAL FINE MATERIALS BORZALINO, LOYAL TO THE IDEA
OF A COLLECTION IN HARMONY WITH ALL THAT IS NATURAL,
COMBINES METALS IN CHROMED, BURNISHED, SATIN AND LACQUERED FINISHES.

N. 21

BRONZE • BEIGE • GREY • GOLD

METALSCOLLECTION2020



POWDER COATING
Metals



Lamps LIRA



Pouf CLIO & GEA

BORZALINO
ITALIAN LUXURY LIVING



HATJE
CANTZ

dal 1900

terza edizione

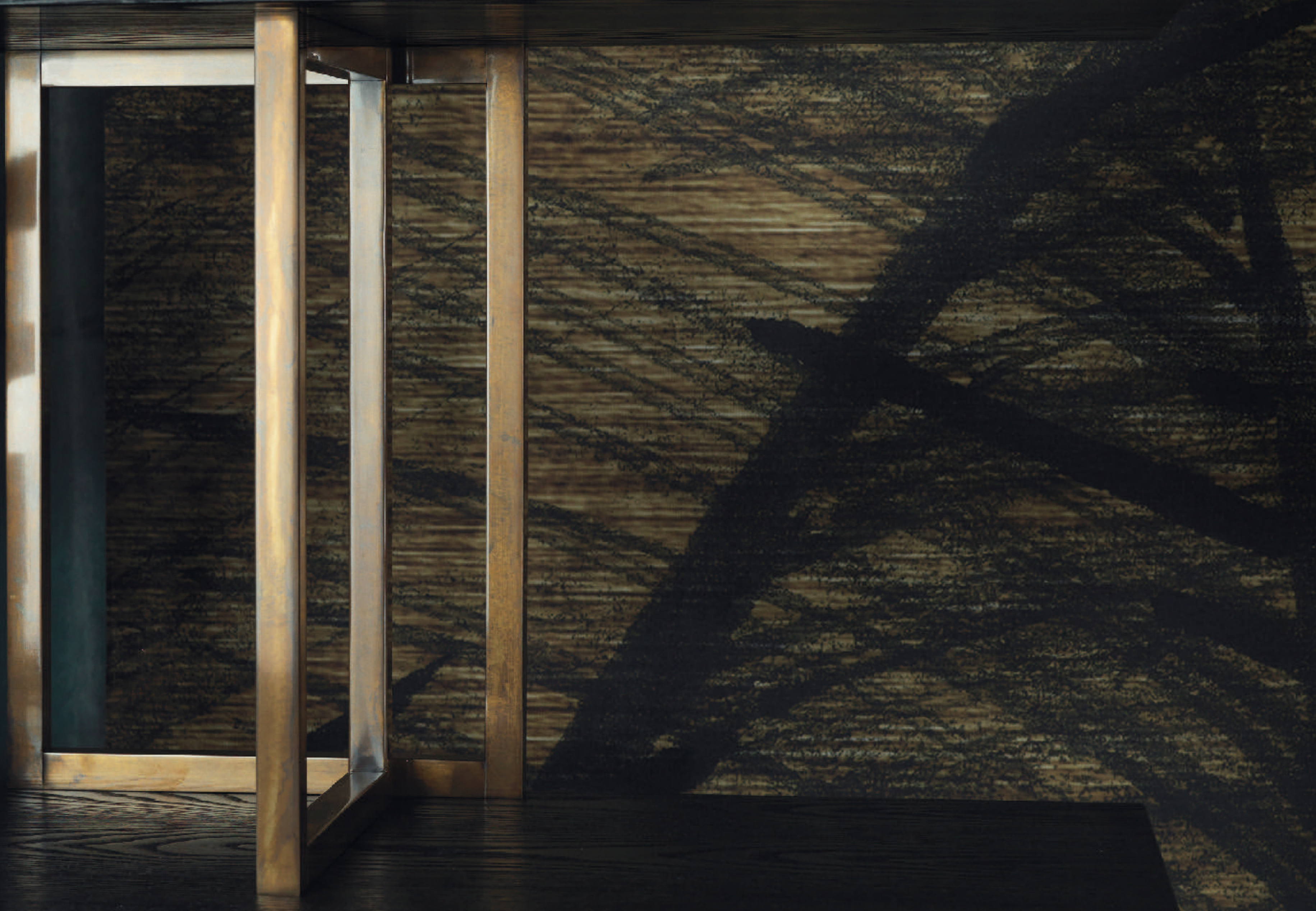
ORS

LINKS



2000

STERN
FISHMAN
TILOVE



METALSCOLLECTION2020

POWDER COATING
Metals

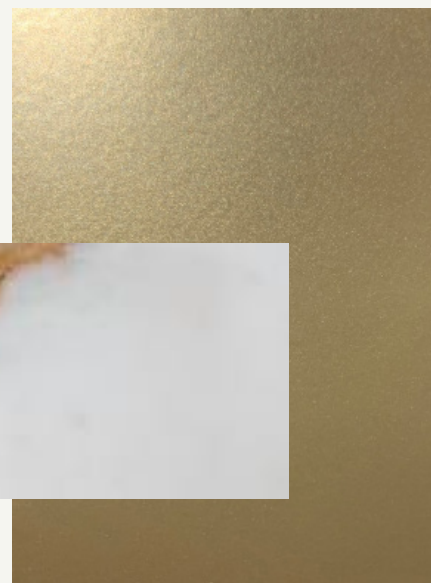


BORZALINO
ITALIAN LUXURY LIVING

TableDORIAN



Marble
Calacatta Vagli
Oro



Metal base col.
Beige YW276I



Metal base col.
Bronze SW268JR



Bronze glass top

BORZALINO
ITALIAN LUXURY LIVING

BORZALINOMATERIALSCOLLECTION2020

GLASSES&MIRRORSCOLLECTION

ELEGANT COMBINATIONS BETWEEN TEXTURE AND CLEAR GLASS THANKS
TO A SILVER OR GOLD METALLIC MESH ENCLOSED
IN TWO LAYERS OF EXTRA CLEAR, BRONZE OR SMOKED GLASS

GLASSES N. 9 COMPOSITIONS
MIRRORS N. 3



MARQUISE



MIRRORSCOLLECTION2020



Mirrors MARQUISE

BORZALINO
ITALIAN LUXURY LIVING

CLEAR, BRONZE, SMOKY
Mirrors



Clear mirror

Bronze mirror

Smoky mirror

HALEMOON



MIRRORSCOLLECTION2020



Mirrors HALF MOON more diameters 40/55/75/110

BORZALINO
ITALIAN LUXURY LIVING

CLEAR, BRONZE, SMOKY
Mirrors



Metal finishing
Burnished
Bronze



Fabric TULUA 9080 col.01



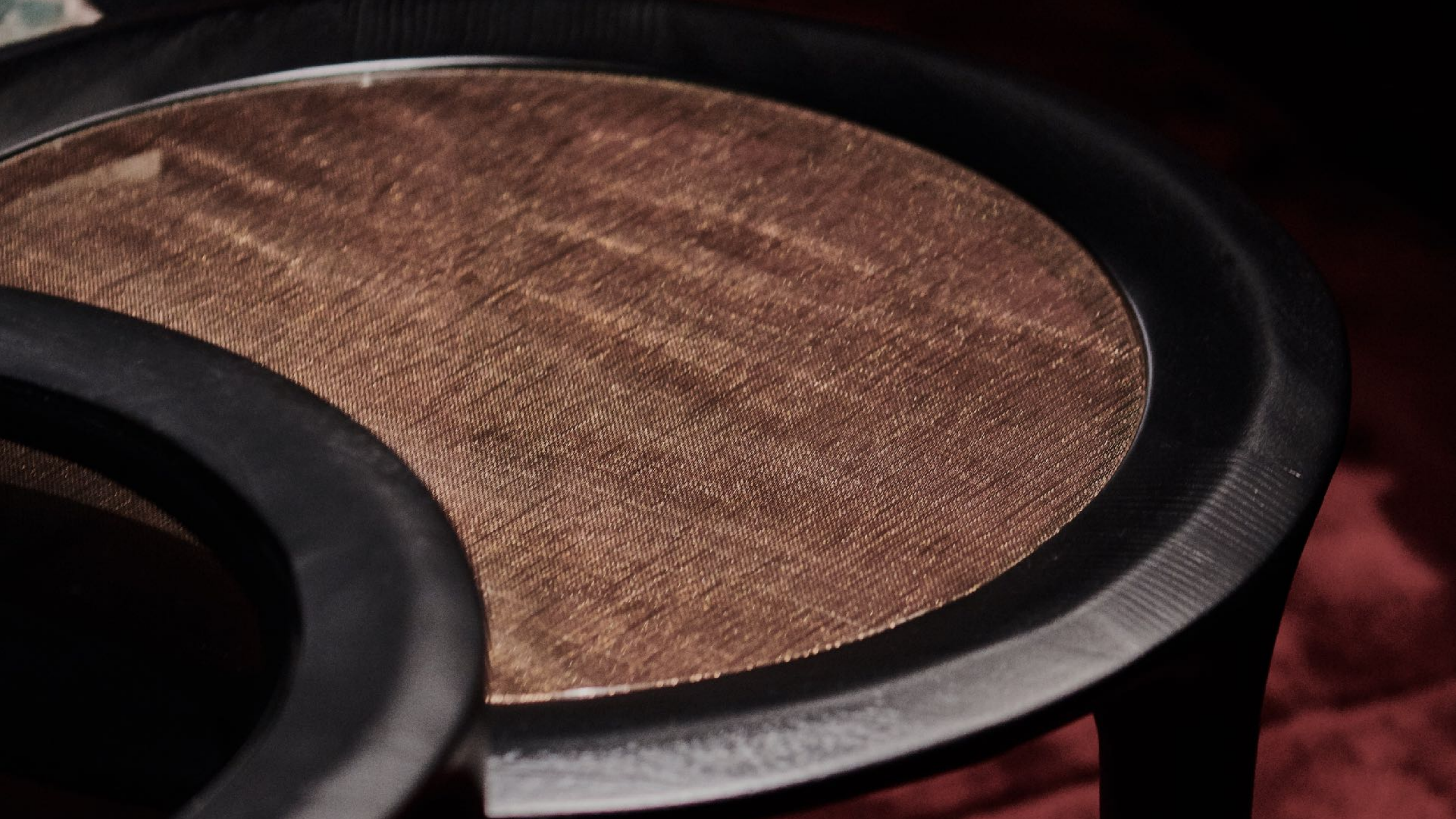
Clear mirror



Bronze mirror



Smoky mirror



GLASSESCOLLECTION2020

**EXTRA CLEAR
GOLDEN MESH**
Glass



BORZALINO
ITALIAN LUXURY LIVING



**SMOKY
SILVER MESH**
Glass



**SMOKY
GOLDEN MESH**
Glass

BORZALINO
ITALIAN LUXURY LIVING

BORZALINOMATERIALSCOLLECTION2020

CONTRACT MATERIALS

A FULL RANGE OF COVERINGS WITH ALL THE CHARACTERISTICS
REQUIRED FOR CONTRACT PROJECTS

N. 18

Imitation Leathers, fabrics and velvets



ich bin trendsetter,
abschnittgefährter,
schönfärber, tränetrockner,
glücklichmacher,
partysetter, wellenglätter,
traumerfüller, gedankenleser,
ausbügler, **friseur.**

PROJECT
TOM ALMHÜTTE
MARIA ALM / AUSTRIA

Covering
REBEL
col. 03

CONTRACTCOLLECTION2020

N. 14 colours

REBEL Imitation leather



Fire resistance
UNI 9175: classe 1IM
BS 5852 -1 (source 0 and 1)
BS 5852 - crib 5
EN 1021-1
EN 1021-2
TB 117: 2013



Waterproof



Tear strength



Easy to clean



1



2



3



4



5



6



10



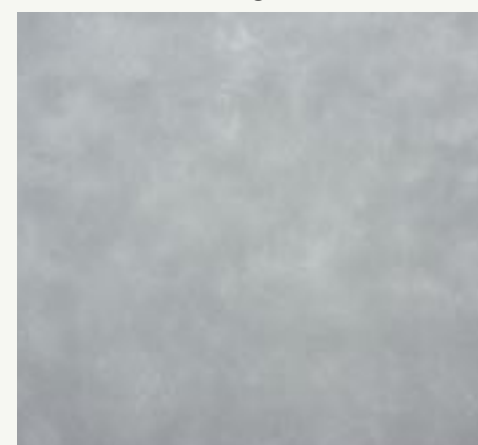
17



11



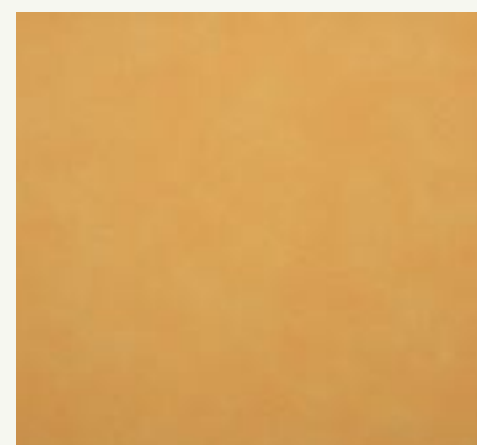
12



13



16



14



15



BORZALINO
ITALIAN LUXURY LIVING

Expanded microspheres are used to give Rebel a special finishing and obtain a highly velvety and sophisticated appearance.

As a result of wear, continued friction or rubbing on the surface of the fabric, it becomes even more appealing as microspheres expand and get slightly deformed to create a vintage effect.

CONTRACTCOLLECTION2020

N. 42 colours

ARCHITECTURE FR Fabric



Fire resistance
UNI 9175: classe 1IM
EN 1021 part. 2
Tb 117 sez. E
part.1 (California)



Tear
strenght



Easy
to clean



384



462



984



884



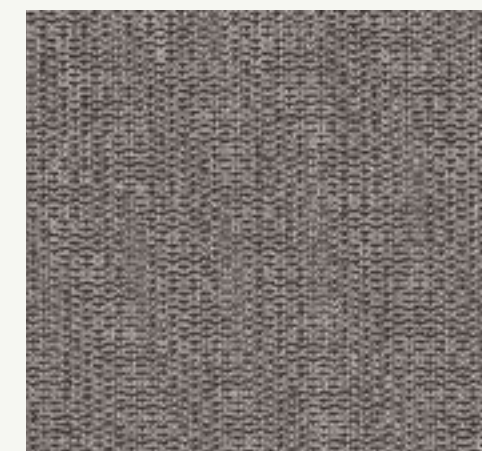
1084



1384



1484



1562



1584



1662



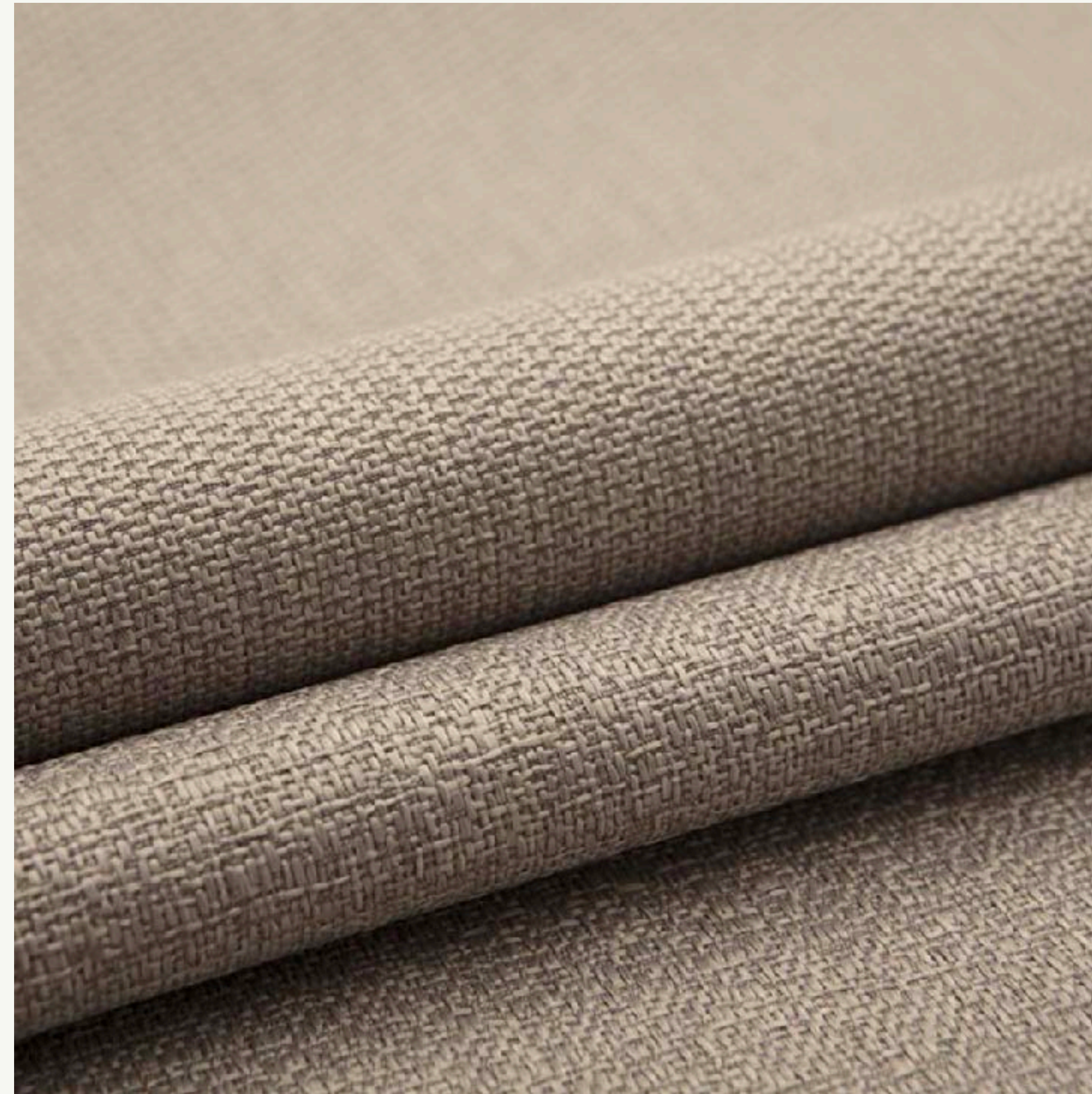
1684



1784



2284



BORZALINO

ITALIAN LUXURY LIVING

Is made with new generation and stain-resistant yarns; it does not contain any chemical treatment harmful to health.

It can be easily cleaned: it has been projected to bear many washings in washing machine without suffering dimensional reductions.

Is very resistant to tearing and abrasion and has an excellent colour fastness to light.

Does not contain and does not release any substance harmful to human health, it fully respects the European legislation demands concerning the use of dyes.

CONTRACTCOLLECTION2020

N. 36 colours

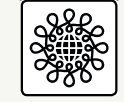
SNOB FR Velvet



Fire resistance
UNI 9175: classe 1IM
EN 1021 part. 1-2
BS 5852-1 (source 0 and 1)



Tear
strenght



Oeko tex



1003



1005



1006



1008



1010



1012



1015



1021



1023



1028



1029



1036



1037



1038



BORZALINO
ITALIAN LUXURY LIVING

Delicate and soft to the touch, washable, and resistant to wear, Snob FR is an innovative velvet that perfectly adapts to every kind of upholstered furniture.

A range of 36 elegant and delicate pastel colours, slightly mélange, obtained by dyeing both fibres together. This is what makes all Snob FR nuances easy to combine with any kind of environment.

BORZALINO

ITALIAN LUXURY LIVING

FRANKLIN Sofa 2024/25 154x85x65cm

FRIDA & ADELE Mirror 120x45 / Mirror 110x30

FRISBEE Armchair 70x71x65cm

BROCK Coffee table 100x45x45cm

Washable fabric 100% cotton
 Armchair 70x71x65cm
 Dimensions: 70x71x65cm
 Material: 100% cotton
 Washable fabric 100% cotton

Washable fabric 100% cotton
 Dimensions: 100x45x45cm
 Material: 100% cotton
 Washable fabric 100% cotton

Washable fabric 100% cotton
 Dimensions: 120x45 / 110x30
 Material: 100% cotton
 Washable fabric 100% cotton

Washable fabric 100% cotton
 Dimensions: 70x71x65cm
 Material: 100% cotton
 Washable fabric 100% cotton

E140 Dining table 120x120x75cm

ECLIPSE Mirror 120x45 / 110x30

NFI Chair 45x50x85cm

CLIC Stool 40x40x45cm

HALF-MOON Mirror 120x45 / 110x30

Washable fabric 100% cotton
 Dimensions: 120x120x75cm
 Material: 100% cotton
 Washable fabric 100% cotton

Washable fabric 100% cotton
 Dimensions: 120x45 / 110x30
 Material: 100% cotton
 Washable fabric 100% cotton

Washable fabric 100% cotton
 Dimensions: 45x50x85cm
 Material: 100% cotton
 Washable fabric 100% cotton

Washable fabric 100% cotton
 Dimensions: 40x40x45cm
 Material: 100% cotton
 Washable fabric 100% cotton

Washable fabric 100% cotton
 Dimensions: 120x45 / 110x30
 Material: 100% cotton
 Washable fabric 100% cotton

BEN Sofa 2024/25 154x85x65cm

PAUL 2 Chair 45x50x85cm

SIGMUND Armchair 70x71x65cm

PAUL 1 Chair 45x50x85cm

BEN Sofa 2024/25 154x85x65cm

KRIS Sideboard 180x90x100cm

Washable fabric 100% cotton
 Dimensions: 154x85x65cm
 Material: 100% cotton
 Washable fabric 100% cotton

Washable fabric 100% cotton
 Dimensions: 45x50x85cm
 Material: 100% cotton
 Washable fabric 100% cotton

Washable fabric 100% cotton
 Dimensions: 70x71x65cm
 Material: 100% cotton
 Washable fabric 100% cotton

Washable fabric 100% cotton
 Dimensions: 45x50x85cm
 Material: 100% cotton
 Washable fabric 100% cotton

Washable fabric 100% cotton
 Dimensions: 154x85x65cm
 Material: 100% cotton
 Washable fabric 100% cotton

Washable fabric 100% cotton
 Dimensions: 180x90x100cm
 Material: 100% cotton
 Washable fabric 100% cotton

BORZALINO
ITALIAN LUXURY LIVING

INVISIBLE MATERIALS

WE PAY PARTICULAR ATTENTION TO THE CHOICE OF MATERIALS
THAT MAKE UP THE STRUCTURE OF PADDED PARTS THAT ARE NATURALLY
NOT VISIBLE, BUT NO LESS IMPORTANT.

A man in a dark, textured suit jacket and light-colored shirt stands with his arms crossed on the right side of the frame. He is wearing a watch with a white face and a brown leather strap on his left wrist. To his left is a large stack of light-colored wooden frames, likely made of beech wood, which are the subject of the advertisement. The frames are stacked in a way that shows their curved, tiered structure. The background is a workshop or factory setting with wooden walls and floors.

theFRAME

THEY ARE THE MOST IMPORTANT SUPPORT AND FOR THIS REASON
THEY ARE MADE OF SOLID BEECH WOOD, THE HARDEST
OF ALL WOODS, TOGETHER WITH POPLAR PLYWOOD
FOR SOME SUPPORT DETAILS



POLYURETHANE FOAM

WE USE SPECIALLY DESIGNED POLYURETHANES FOR MATTRESSES. THEY ARE MUCH MORE ELASTIC MATERIALS THAT GIVE INCOMPARABLE COMFORT AND HAVE AN ALMOST INFINITE DURABILITY.

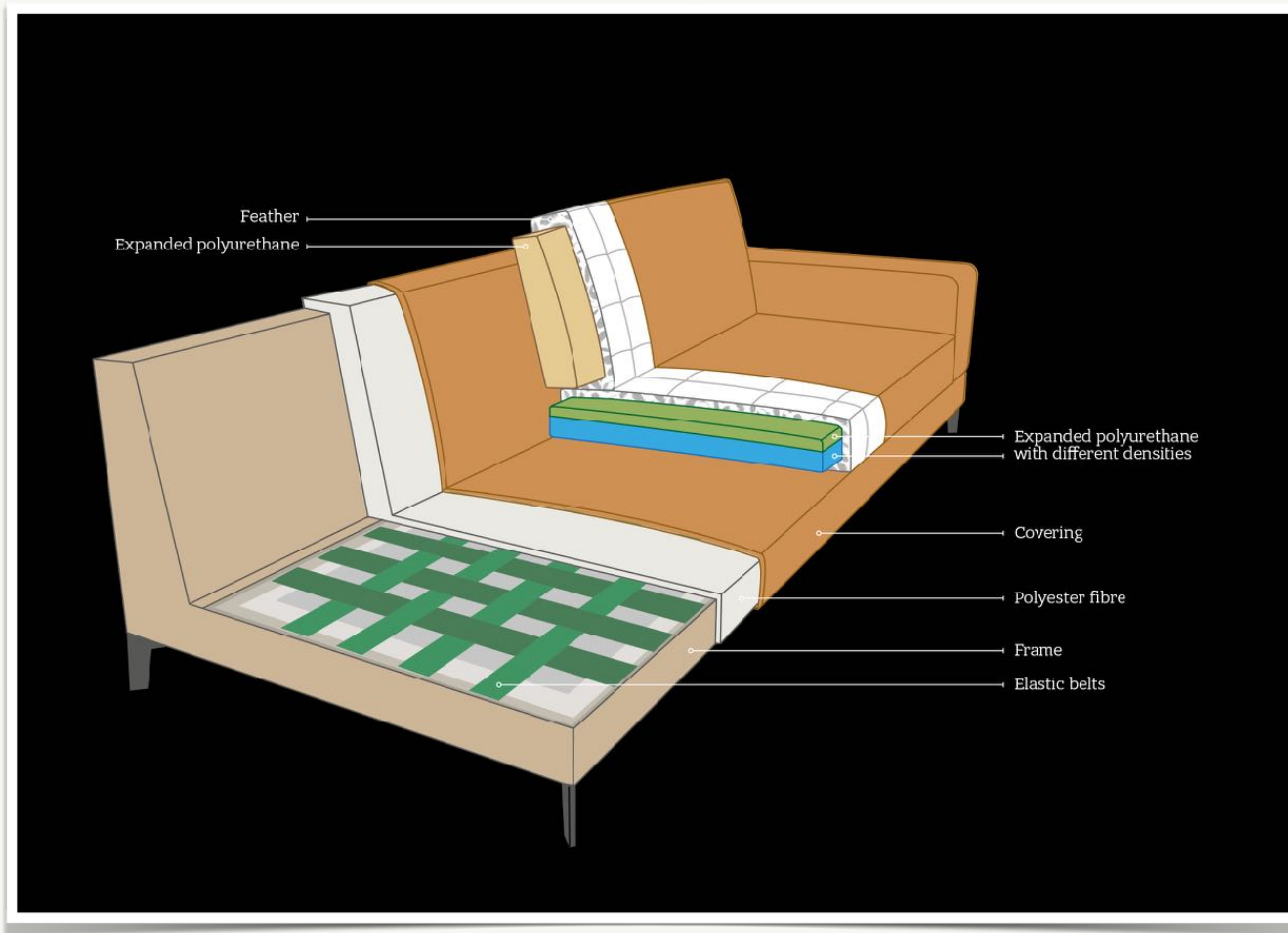


BORZALINO
ITALIAN LUXURY LIVING

FEATHERS

IN MANY OF OUR PRODUCTS, BASED ON THE COMFORT WE WANT TO ACHIEVE, WE ALSO USE A GOOSE DOWN AND FEATHER, STRICTLY OF EUROPEAN ORIGIN AND CERTIFIED 100% HYPOALLERGENIC.

Example for
models:
BEN
STATUS QUO



BORZALINO
ITALIAN LUXURY LIVING

Questions & Suggestions

BORZALINO
ITALIAN LUXURY LIVING

BORZALINO

ITALIAN LUXURY LIVING

BORZALINO is a trademark of Eurostile srl.
Any reproduction of this document, even partial,
is prohibited without the prior authorisation
of the company Eurostile srl.

EUROSTILE Srl

via Redolone 46 loc. Ponte Stella
51034 Casalguidi (PT) · Italy

tel +39. 0573. 928651
fax +39. 0573. 526391
info@borzalino.com

Photographic techniques do not allow perfect
reproduction of color shades, which should therefore
be considered as purely indicative
Printed colors on leather or fabrics may vary.

© all rights reserved Eurostile srl 2020



Selected by MADE IN TUSCANY
the brand encompassing companies
which proudly guarantee to carry
out their activities in Tuscany.



Follow us



#BORZALINO_ITALY



Thank you all