



BORZALINO
ITALIAN LUXURY LIVING

Mystique

CONTRACT COLLECTION

Mystique è un tessuto ignifugo finemente vellutato a corpo unico, senza tessuti incollati di sostegno, ideale per realizzare mobili imbottiti di ogni genere per alberghi e locali pubblici.

Mystique è realizzata con tecniche tessili di avanguardia utilizzando sottilissimi filati di poliestere. Il tatto molto morbido del tessuto è simile a quello della pelle scamosciata.

Ad alta resistenza e di facile manutenzione, Mystique viene prodotto in tinte vivaci e colori pastello tutti disponibili a magazzino in 40 varianti di colore.

Mystique is a finely velvety fire resistant fabric, without glued support fabrics, ideal for making up all kinds of upholstered furniture for hotels and public places.

Mystique is made with cutting-edge textile techniques using very thin polyester yarn. The very soft touch of the fabric is similar to that of suede.

Extremely resistant and easy to maintain, Mystique is produced in both bright and pastel tones all available on stock in 40 colours.

SETTORI / SECTORS




APPLICAZIONI / USES



CARATTERISTICHE / FEATURES



SCHEDA TECNICA / TECHNICAL DETAILS	UNITÀ / UNIT	NORMA / TEST METHOD	VALORI / LIMIT VALUE
Peso / Weight	g/m²	-	350
Altezza / Width	cm	-	140
Composizione / Composition	-	-	96% PES - 4% ACR FR
Pelosità superficiale e pilling / Fuzzing and pilling test	-	UNI EN ISO 12945-2	4/5
Resistenza all'abrasione / Abrasion resistance (Martindale)	cicli/cycles	UNI EN ISO 12947-2	60.000
Solidità colori allo sfregamento a secco / Colour fastness to dry rubbing	grey scale	UNI EN ISO 105-X12	4
Solidità colori allo sfregamento a umido / Colour fastness to wet rubbing	grey scale	UNI EN ISO 105-X12	4
Solidità colori alla luce / Colour fastness to light (Xenotest)	blue scale	UNI EN ISO 105-Bo2	4



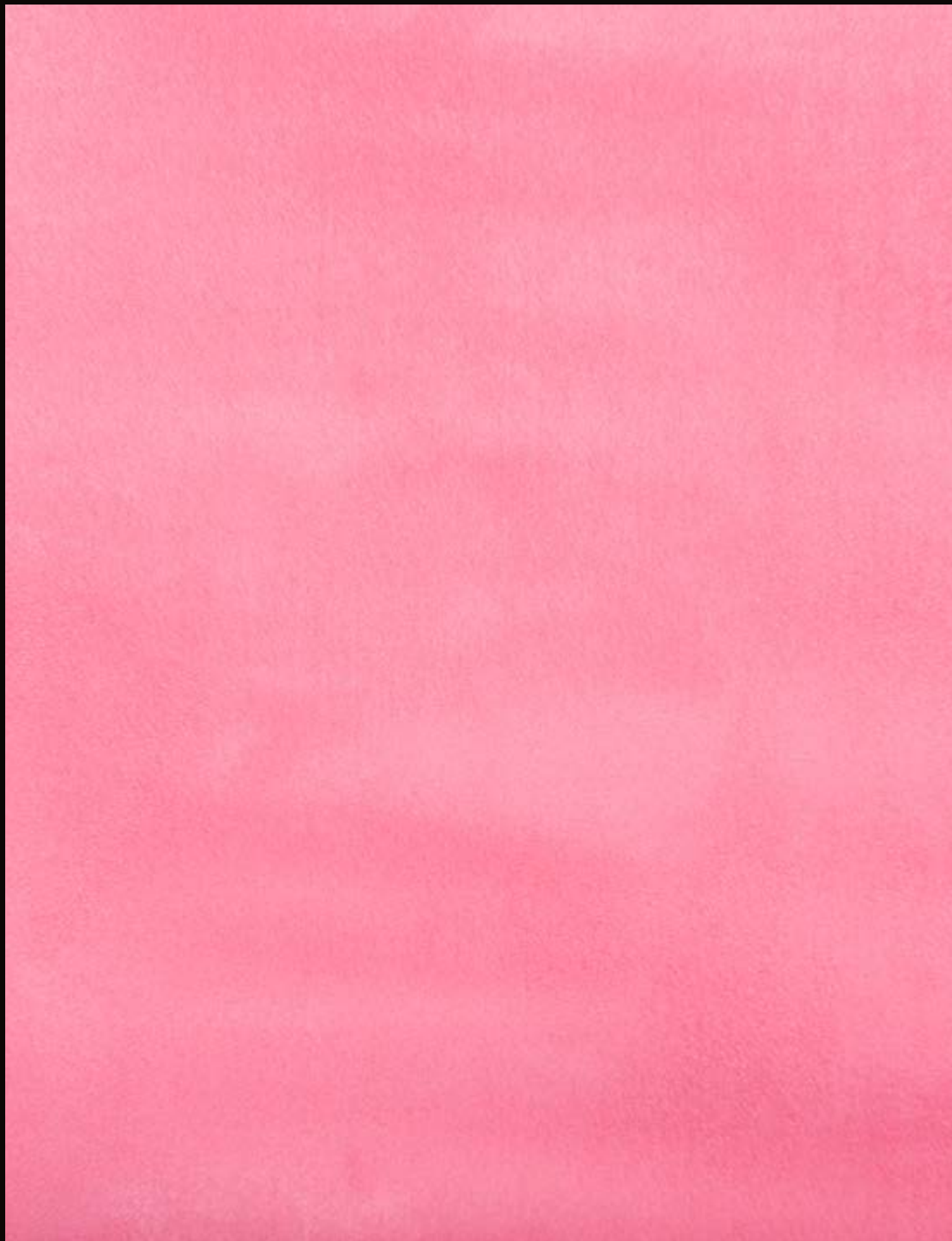
RESISTENZA AL FUOCO
FIRE RESISTANCE

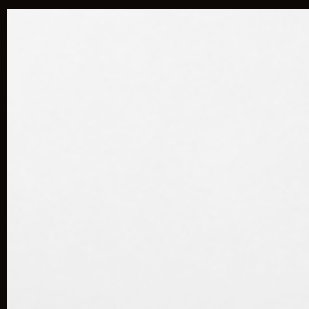
UNI 9175 classe 1IM
EN 1021-1
EN 1021-2
BS 5852-1 cigarette test
BS 5852-1 match test
IMO FTP CODE 2010

NORME DI PULIZIA — Per le istruzioni dettagliate di lavaggio e manutenzione del tessuto e per conoscere i prodotti più adatti alla sua pulizia, consultare il sito www.flukso.it.

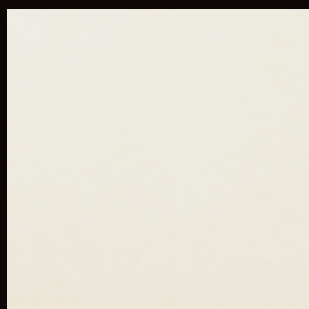
CLEANING INSTRUCTIONS —Check our website www.flukso.it for detailed washing and maintenance instructions related to the fabric and to know the most suitable cleaning products.







0085



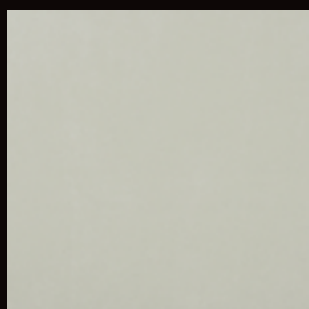
0185



3185



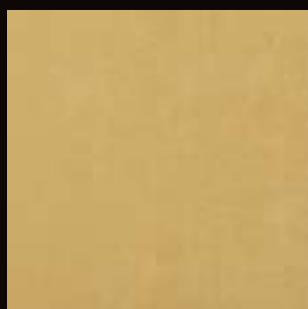
0785



0285



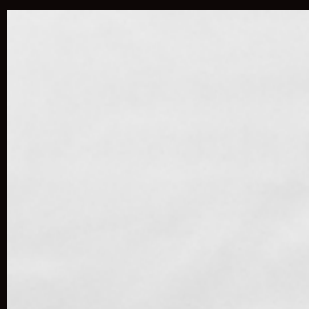
0385



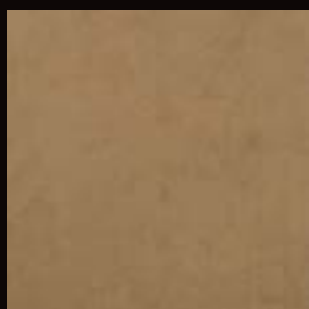
0985



0885



3685



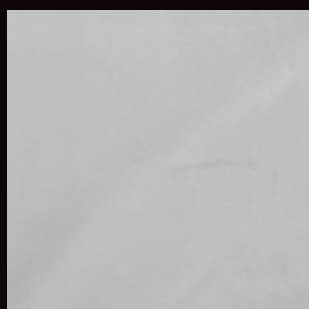
0585



1085



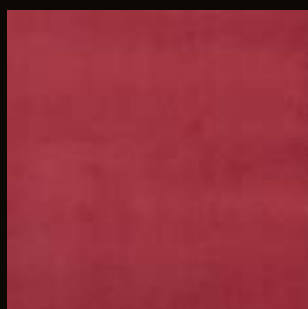
1285



3985



4085



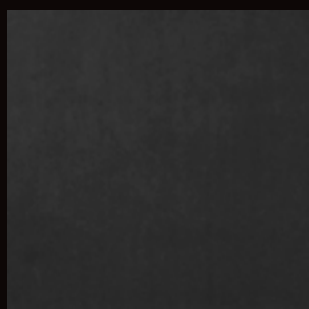
1485



4185



2785



2885



1585



1385



1685



3285



3385



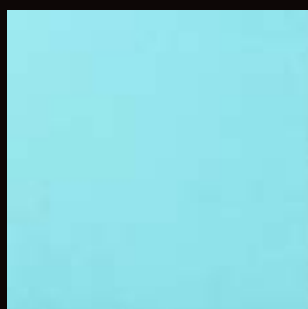
2085



2985



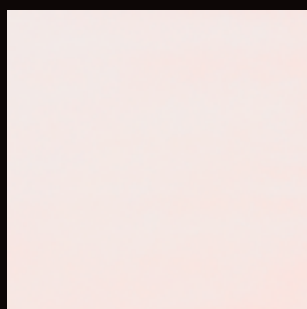
3485



3585



2185



3785



2585



3885



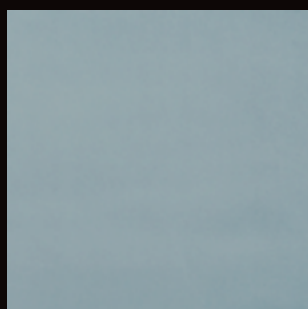
2385



4285



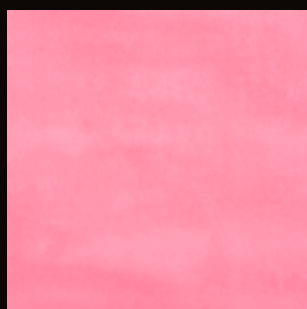
4385



4485



2285



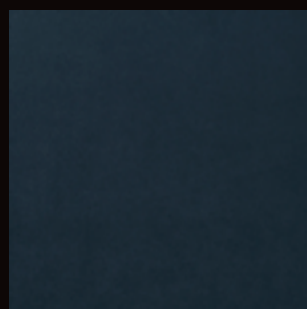
4585



4685



4785



4885