

# TULUA

FABRIC

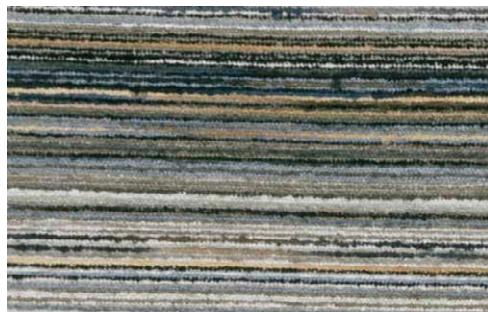
CAT. N



**Composizione:**  
62% viscosa, 24% cotone, 8% poliestere,  
6% poliamide  
**Larghezza:** 142 cm  
**Rapporto disegno:**  
verticale: 59 cm  
**Martindale:** 100000  
**Design:** trama strutturata in ciniglia

**Composition:**  
62% viscose, 24% cotton, 8% polyester,  
6% polyamide  
**Width:** 55.9"  
**Pattern Repeat:**  
vertical: 23.2"  
**Martindale:** 100000  
**Design:** textured chenille weave

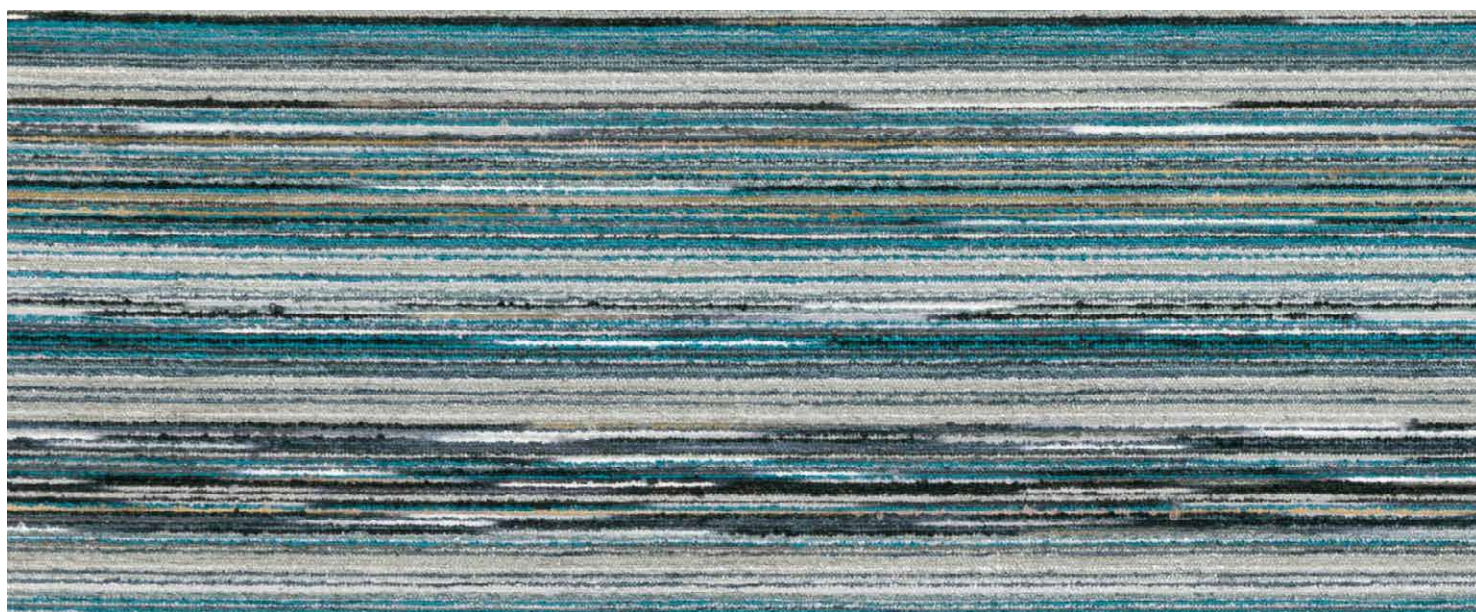
**Composition :**  
62% viscose, 24% coton, 8% polyester,  
6% polyamide  
**Largeur :** 142 cm  
**Répétition du motif :**  
vertical: 59 cm  
**Martindale :** 100000  
**Motif :** chenille texturée



TULUA 9080 - 01



TULUA 9080 - 02



TULUA 9080 - 02

Tutte le immagini sono inserite a scopo illustrativo, i colori sono puramente indicativi e possono differire dai toni reali. All images are shown for illustrative purposes, the colors are purely indicative and may differ from the real tones. Toutes les images sont présentées à titre d'illustration, les couleurs vues sur l'écran sont purement indicatives et peuvent différer des tons réels.

## BORZALINO