

# CINERA

FABRIC

CAT. LUX4

**Composizione:**  
28% cotone, 27% poliestere, 17% viscosa,  
10% lana, 8% acrilico, 2% poliamide  
**Larghezza:** 142 cm  
**Martindale:** 30000  
**Design:** trama testurizzata

**Composition:**  
28% cotton, 27% polyester, 17% viscose,  
10% wool, 8% acrylic, 2% polyamide  
**Width:** 55.9"  
**Martindale:** 30000  
**Design:** textured weave

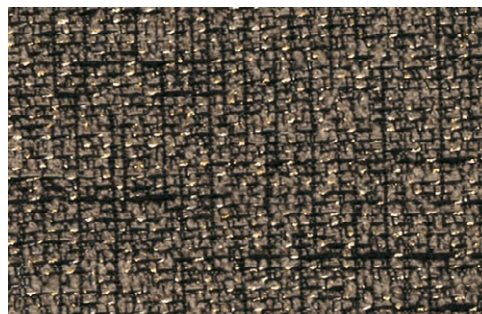
**Composition :**  
28% coton, 27% polyester, 17% viscose,  
10% laine, 8% acrylique, 2% polyamide  
**Largeur :** 142 cm  
**Martindale :** 30000  
**Motif :** tissage texturé



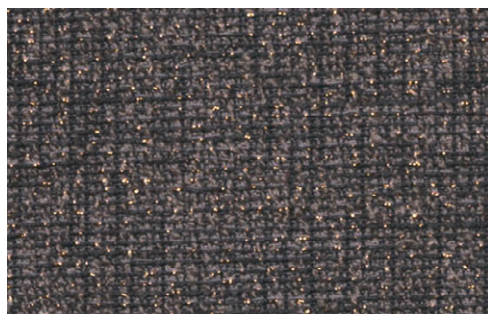
CINERA 9054 - 02



CINERA 9054 - 03



CINERA 9054 - 04



CINERA 9054 - 05



ESME - CINERA 9054 - 03

Tutte le immagini sono inserite a scopo illustrativo, i colori sono puramente indicativi e possono differire dai toni reali. All images are shown for illustrative purposes, the colors are purely indicative and may differ from the real tones. Toutes les images sont présentées à titre d'illustration, les couleurs vues sur l'écran sont purement indicatives et peuvent différer des tons réels.

## BORZALINO